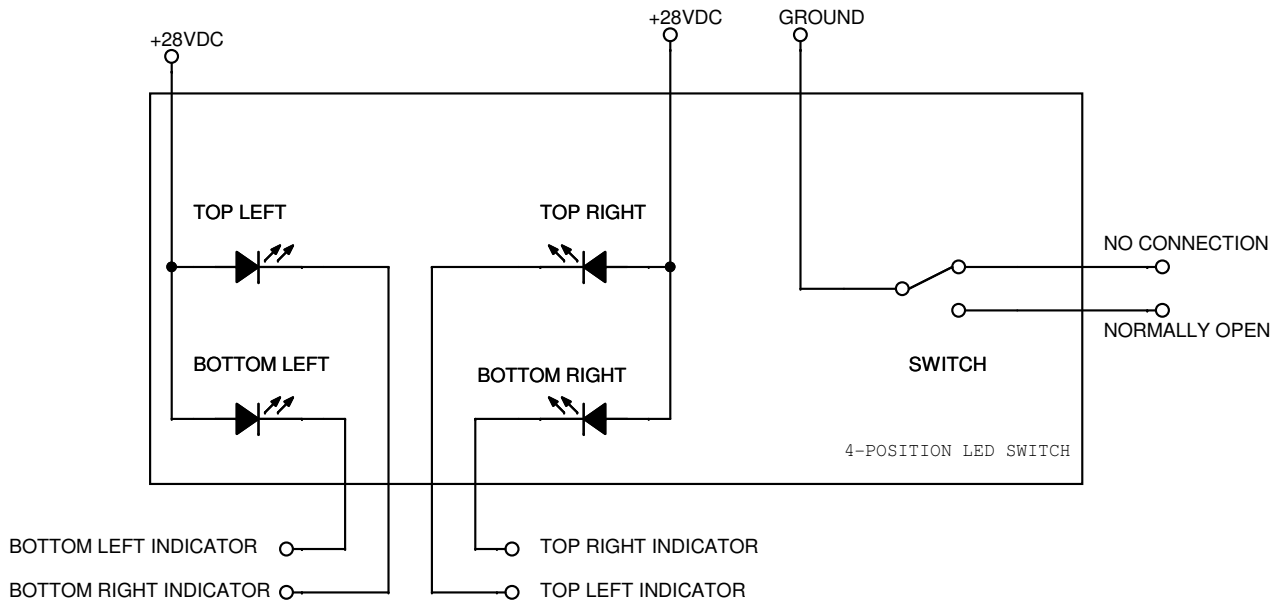



Switch Wiring Suggestion:

The diagram below shows a suggested wiring of the switch. From the DB-25 connector, use the Normally Open pin and a DC ground (switch common) to establish the switch connection.

To control the indicators, supply 28V DC power to the common Anode of the indicators (or the power side). Connect each Cathode (or ground side) for each indicator to the DB pins as indicated in this manual.

If there is a ground difference between the unit and the aircraft, this might cause the switches not to operate properly. The DB-25 connector includes 28V DC and ground to supplies to the switches if such problem arises.



	Document Number: MAN – DAPS440-SW	Rev: D	Revision Date: 09/14/2010 Page 8 of 15
---	--	-----------------------------	---

Video Wiring Suggestions

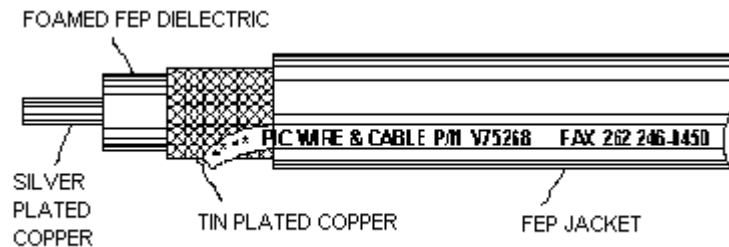
All shields should be grounded to the connector at the source, and floating at the display.

Avoid routing video wiring parallel to:

- AC wiring
- Strobe wiring
- DC motor supply cables
- Inverter cabling
- Or any other potential noise source.

S-Video/Composite and Audio Wiring

Recommended cable for s-video/composite and audio purposes is PIC 75 Ohm Coax, P/N V75268. This is a lightweight, flexible, and low signal loss cable which meets FAA flammability requirements of FAR 23.1359(d), FAR 25.853(a) and FAR 25.869(a)(4).



Similar aviation coaxial cable can be used from other vendors, as well.

Some aircraft are prone to AC noise - we recommend adding to the composite source a 75Ohm video isolation transformer such as Deerfield Laboratory, Inc. Part No. 162-1 (www.deerfieldlab.com, (650) 632-4090). In most cases this should be added to the video output of the source.

Power and Ground Wiring

22 AWG wire is recommended for Power and Ground applications.

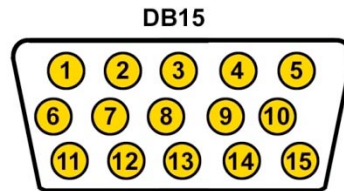
Power/Video

Pin out for P1 (High Density DB-15 Receptacle)

Part Numbers for DB-15 connectors, manufactured by Tyco or Amp.

High density, D-sub, 15 contact receptacle (female) P/N 748565-1

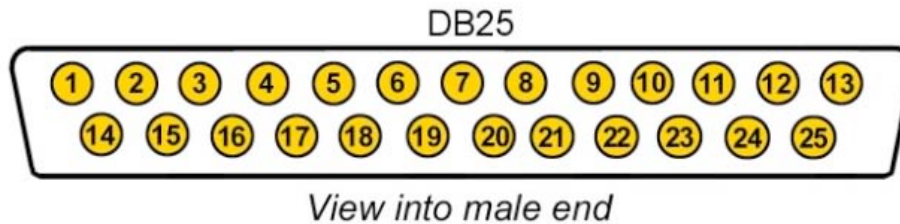
HD15F pins P/N M39029/57-354




View into male end

Pin Number	Description
1	28VDC Power In
2	28VDC Ground In
3	N/C
4	N/C
5	N/C
6	12VDC Power Out
7	12VDC Ground Out
8	N/C
9	12VDC Power Out
10	12VDC Ground Out
11	N/C
12	N/C
13	N/C
14	N/C
15	N/C

Pin out for P1 (High Density DB-25 Receptacle)



Pin Number	Switch	Description
1		28V Output
2		28V Output
3	1	Normally Open
4	1	Top Left Indicator
5	1	Top Right Indicator
6	1	Bottom Left Indicator
7	1	Bottom Right Indicator
8	2	Normally Open
9	2	Top Left Indicator
10	2	Top Right Indicator
11	2	Bottom Left Indicator
12	2	Bottom Right Indicator
13		Ground
14	3	Normally Open
15	3	Top Left Indicator
16	3	Top Right Indicator
17	3	Bottom Left Indicator
18	3	Bottom Right Indicator
19	4	Normally Open
20	4	Top Left Indicator
21	4	Top Right Indicator
22	4	Bottom Left Indicator
23	4	Bottom Right Indicator
24		Ground
25		Ground

	Document Number: MAN – DAPS440-SW	Rev: D	Revision Date: 09/14/2010 Page 11 of 15
---	--	-----------------------------	--

Troubleshooting

Video Noise

Check for an incorrect ground in the installation wiring. See specific examples of video noise below, or visit <http://flightdisplay.com/Grounding.pdf>

Snow or Sweeping Lines

Lines that slowly sweep up and down are a result of AC noise. This AC noise can be generated by a power cart on the aircraft. Take the power cart off of the aircraft. Be careful of inverter wiring, which can also cause noise. Stand off the wires, if necessary.

If snow or sweeping lines persist, it is possible that the ground is at an incorrect point in the aircraft. Try moving the ground to another location.

No power to Monitor, or No video Input


- Verify correct wiring. Check the base receptacle connectors for possibly damaged pins.
- Check that the video source is:
 1. Powered on,
 2. In Play mode, and
 3. Displaying video.

Color Distortion

- Adjust brightness and contrast settings using the buttons on the monitor.

Remote Control Inoperable

- Confirm that the infrared eye on the LCD screen is visible.
- Replace battery in remote control.

	Document Number: MAN – DAPS440-SW	Rev: D	Revision Date: 09/14/2010 Page 12 of 15
---	--	-----------------------------	--

Technical Support


Should you have any questions concerning this product or other Flight Display Systems products, please contact our Product Support representatives at (678) 867-6717.

Flight Display Systems
1765 Grassland Parkway
Alpharetta, GA 30004
Phone: 678-867-6717
Fax: 678-867-6742
Email: sales@flightdisplay.com

For further product information, technical data and sample wiring diagrams, please click on the **Dealers** section of our web site at www.flightdisplay.com

Instructions for Continued Airworthiness

The DAPS440-SW is designed not to require regular general maintenance.

	Document Number: MAN – DAPS440-SW	Rev: D	Revision Date: 09/14/2010 Page 13 of 15
---	--	-----------------------------	--

Warranty Information

Flight Display Systems warrants the DAPS440-SW against material or manufacturing defects for a two-year period (effective 1/1/2009 on all equipment shipped with 2009 pricing). Warranty begins on date of installation.

If product support is required, please call our Technical Support team at 678-867-6717 to obtain assistance. If the return of the unit to the factory is required, an RMA number will be issued at that time. Flight Display Systems will, upon receipt of the failed hardware, remanufacture or replace the unit at our discretion.

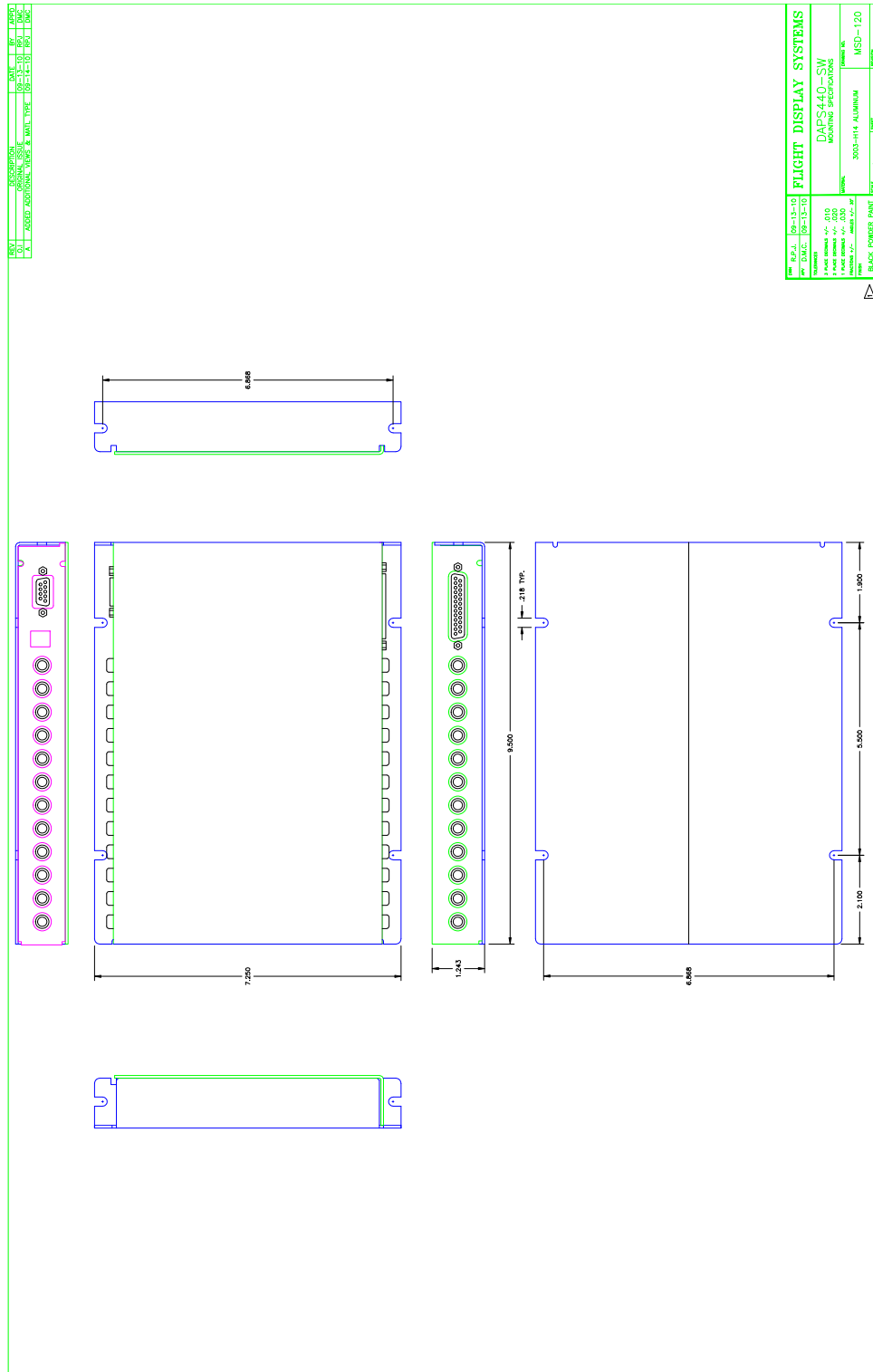
Flight Display Systems will pay Ground Shipping charges for warranted items. Charges for express shipment will be the responsibility of the sender.


This warranty is not transferable. Any implied warranties expire at the expiration date of this warranty. We shall not be liable for incidental or consequential damages.

This warranty does not cover a defect or failure that has resulted from improper or unreasonable installation, use or maintenance, as determined by Flight Display Systems. This warranty is void if there is any attempt to disassemble or open this product without factory authorization.

Any labor charges associated with the removal of product or related troubleshooting by a firm other than Flight Display Systems or its designee will not be covered.

Installation Drawing



	Document Number: MAN – DAPS440-SW	Rev: D	Revision Date: 09/14/2010 Page 15 of 15
---	--	-----------------------------	--

Log of Revisions

Rev	Date	Page	Description
A	10/29/2007		Initial Release
B	04/28/2008	1,5,6	Update Picture, Change Verbage, Update Pinouts
C	04/14/2009	2,9	Update Specifications, Warranty Info
D	09/14/2010	5,6,7,14	Revised Additional Info and Installation Instructions, Added Switch Connection Drawing, Revised Installation Drawing, Format Change