

FDREMOTE-M

Installation and Operation Manual

Wireless Remote and Base Station



TECHNICAL SUPPORT
678-867-6717, or
www.FlightDisplay.com

Flight Display Systems

Enhancing the Flight Experience

FDREMOTE-M

Universal Remote

© 2006 Flight Display Systems. All Rights Reserved.

Flight Display Systems

1765 Grassland Parkway

Alpharetta, GA 30004

678-867-6717 Phone

678-867-6742 Fax

sales@flightdisplay.com

www.flightdisplay.com

For the most current copy of all product manuals, please visit our website at

www.flightdisplay.com

Table of Contents

General Information

Front View	1
Additional Information.....	1

Specifications	2
-----------------------------	----------

Installation Instructions

Power	3
-------------	---

Pinout for DB-9	4
------------------------------	----------

Wiring Diagram	4
----------------------	---

Technical Support

Instructions for Continued Airworthiness

Warranty Information

Assembly Drawing.....	6
-----------------------	---

Index

Log of Revisions	8
------------------------	---

General Information

The FDREMOTE-M is a Universal Remote. The FDREMOTE-M achieves a magnificent combination of power and flexibility, simplifying and automating operation of even the most complex system via its virtually unlimited memory.

Front View



(Remote and Base may vary from picture shown above.)

Additional Information

The Remote is equipped with a bright easy to read LCD screen. The screen labels the six hard buttons (easy to find by feel) positioned on the right hand side of the screen. In combination with the Base Station, the Remote can control your system without being in line-of-sight of the equipment. RF Addressing gives you the ability to control equipment locations throughout the cabin, even if they are concealed behind cabinets or panelling.

Specifications

Remote	
Dimensions	8.9" (L) x 1.1" (H) x 2.35" (D)
Weight	7.6 oz (with batteries)
Macro Frequencies	15 kHz to 460 kHz
RF Frequencies	418 MHz
Range	50 - 100 feet
RF Output Power	Less than 1 mW
Power	4 x AAA Alkaline Batteries (Included)
Base Station	
Dimensions	7.8" (W) x 1.36" (H) x 5" (D)
Weight	1 lbs
IR Flasher Outputs	3.5mm Mono Mini Jacks
Power	28VDC @ 0.5 Amps
DO-160 TESTED	FAA/PMA Approved

Installation Instructions

All cabin entertainment equipment, such as the FDREMOTE-M, should be installed on a non-essential bus and have a dedicated circuit breaker. It is necessary that a switch be installed in the cockpit so that the pilot can de-energize the entertainment system should it become necessary.

Please contact Flight Display Systems technical support for troubleshooting, programming, installation, etc. We fully support the FDREMOTE-M as well as the rest of our products.

Remote Control

For help with Remote Control setup, call Flight Display Systems technical support.

Base Station Installation

1. Determine optimal installation location for the unit; the unit should not be shielded by metal, and should be within reasonable distance to the devices to be controlled ("Devices").

2. Run the included flashers from the Devices to the FDREMOTE-M base station. The flashers should be mounted at the Devices' IR ports and plugged directly into the device.



3. Once everything has been wired and tested, mount the FDREMOTE-M base station.

Power

This is a **28VDC** unit that requires 0.5 Amps of power. 22 AWG wire is recommended for Power and Ground applications.

Pinout for DB-9

Part Numbers for DB-9 connector, manufactured by Tyco or Amp.

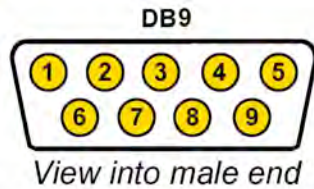
D-sub, 9 contact receptacle (female)

P/N 205203-1

9F pins

P/N M39029/63-368

Wiring Diagram



Pin Number	Description
1	28VDC In - Power
2	28VDC In - Ground
3	N/C
4	N/C
5	N/C
6	N/C
7	N/C
8	N/C
9	N/C

Technical Support

Should you have any questions concerning this product or other Flight Display Systems products, please contact our Product Support representatives at (678) 867-6717.

Flight Display Systems
1765 Grassland Parkway
Alpharetta, GA 30004
Phone: 678-867-6717
Fax: 678-867-6742
Email: sales@flightdisplay.com

For further product information, technical data and sample wiring diagrams, please click on the **Dealers** section of our web site at www.flightdisplay.com

Instructions for Continued Airworthiness

The FDREMOTE-M is designed not to require regular general maintenance.

Warranty Information

Flight Display Systems warrants the FDREMOTE-M against material or manufacturing defects for a *two-year period (effective 1/1/2009 on all equipment shipped with 2009 pricing). Warranty begins on date of installation. *The warranty registration card must be returned upon installation in order to validate the two-year warranty. Any warranty registration not returned during this time period will default to the date of purchase as the warranty start date.

Please call our Technical Support at 678-867-6717 to obtain an RMA number. Flight Display Systems will, upon receipt of the failed hardware, remanufacture or replace the unit at our discretion.

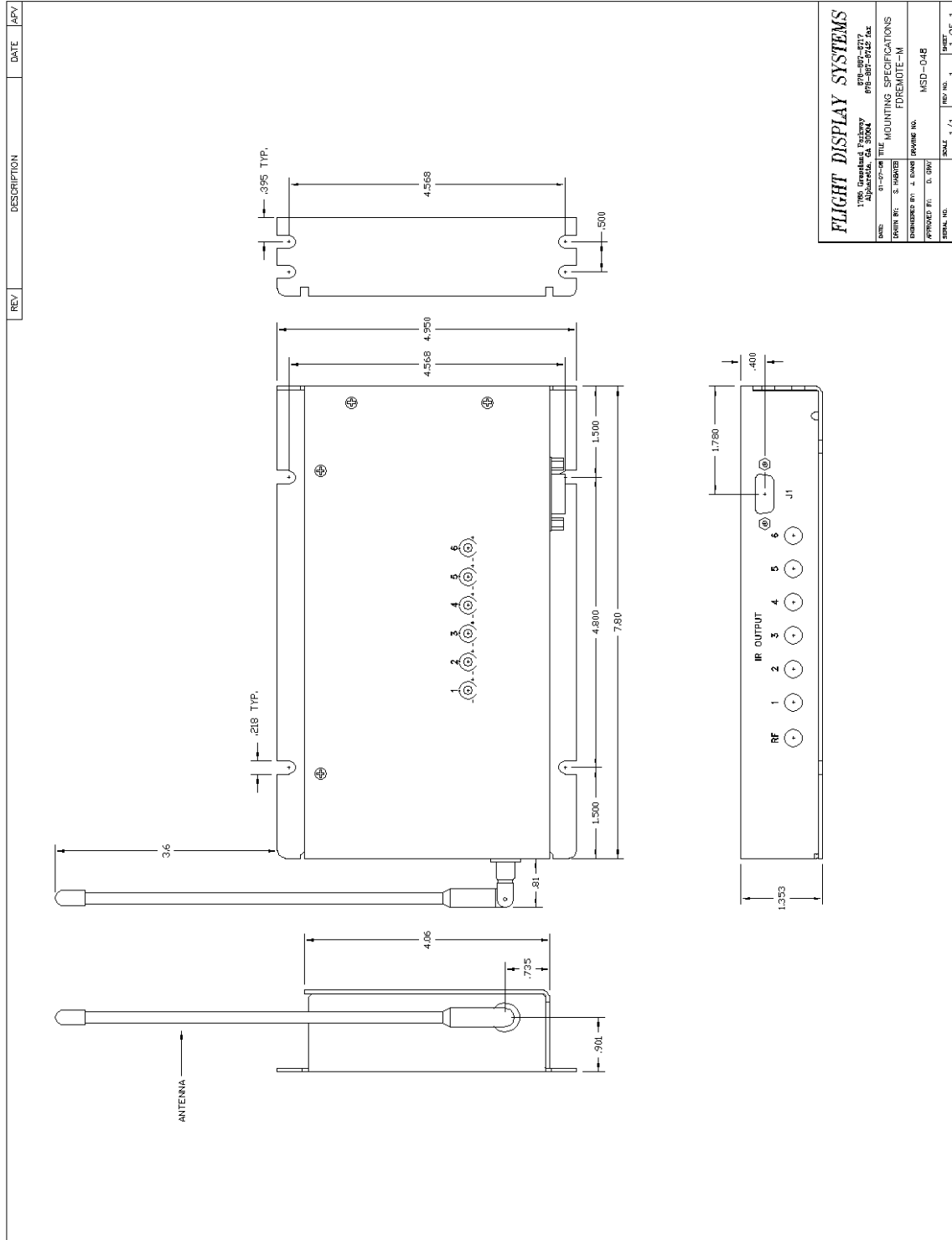
Flight Display Systems will pay Ground Shipping charges for warranted items. Charges for express shipment will be the responsibility of the sender.

This warranty is not transferable. Any implied warranties expire at the expiration date of this warranty. We shall not be liable for incidental or consequential damages.

This warranty does not cover a defect or failure that has resulted from improper or unreasonable installation, use or maintenance, as determined by Flight Display Systems. This warranty is void if there is any attempt to disassemble or open this product without factory authorization.

Any labor charges associated with the removal of product or related troubleshooting by a firm other than Flight Display Systems or its designee will not be covered.

Assembly Drawing



Index

Continued Airworthiness	5	Warranty.....	5
DB-15.....	4	Wiring	4
Support	5	Diagram	4

Log of Revisions

Rev	Date	Page	Description
A	02/16/2007	---	---
B	03/02/2007	1 2 6	Added line about picture variation. Changed dimensions and weights. Changed Assembly drawing to reflect base change.
C	03/24/2009	6	Updated Assembly Drawing
D	04/16/2009	2,3,5	Updated specifications, warranty info, installation info
E	07/20/2009	2	Updated FAA/PMA Testing Approval