


PS3DOC & PS3DOC-1

Installation and Operation Manual

PlayStation 3 Docking Station



TECHNICAL SUPPORT
678-867-6717, or
www.FlightDisplay.com

	Document Number: MAN – PS3DOC/PS3DOC-1	Rev: E	Revision Date: 06/02/2010 Page 2 of 15
---	---	-----------------------------	---

PS3DOC & PS3DOC-1

PlayStation 3 Docking Station

© 2008 Flight Display Systems. All Rights Reserved.

Flight Display Systems
1765 Grassland Parkway
Alpharetta, GA 30004
678-867-6717 Phone
678-867-6742 Fax
sales@flightdisplay.com
www.flightdisplay.com

For the most current copy of all product manuals, please visit our website at
www.flightdisplay.com



	Document Number: MAN – PS3DOC/PS3DOC-1	Rev: E	Revision Date: 06/02/2010 Page 3 of 15
---	---	-----------------------------	---

Table of Contents

General Information	4
1. Front View.....	4
2. Additional Information.....	4
Specifications	7
Docking Instructions	7
1. Power Requirements	7
Installation Considerations	8
1. Power/Video	8
Technical Support	9
Instructions for Continued Airworthiness	9
Warranty	10
Installation Drawings	11
Log of Revisions	15

	Document Number: MAN – PS3DOC/PS3DOC-1	Rev: E	Revision Date: 06/02/2010 Page 4 of 15
---	---	-----------------------------	---

General Information

The PS3DOC is a rugged, slim PS3 Docking Station which offers two elements of In-Flight Entertainment for most aircraft. The unit has been designed specifically to connect with the Sony PlayStation 3 (Not included). The PS3DOC is a great solution to bring Hi-Def into the aircraft via PlayStation 3 Blu-ray DVD. Also, gaming can now be a fun part of the In-Flight Entertainment system.

Front View



See front cover for image of PS3DOC with PlayStation 3

Additional Information

The unit is designed for vertical mounting to allow for installation in the narrowest areas. For a true Hi-Def experience, the PS3DOC can be interfaced with Flight Display System's HD LCDs which are available in 17", 20", 26", 32", and 42" sizes. All of these HD LCDs come standard with 2 HDMI inputs. The DAPSHDMI-1 is a splitter with 2 inputs and 8 outputs that allows for extending and distributing the HDMI signal.

The PS3DOC-1 is a rugged, slim which offers two elements of In-Flight Entertainment for most aircraft. The unit has been designed specifically to connect with the new, slim version of the Sony PlayStation 3 (Not included). The PS3DOC-1 is a great solution to bring Hi-Def into the aircraft via PlayStation 3 Blu-ray DVD. Also, gaming can now be a fun part of the In-Flight Entertainment system.



REAR VIEW OF SLIM VERSION
OF PLAYSTATION 3



FRONT/SIDE VIEW OF SLIM
VERSION OF PLAYSTATION 3


Front View



See front cover for image of PS3DOC-1 with PlayStation 3

Additional Information

The unit is designed for vertical mounting to allow for installation in the narrowest areas. For a true Hi-Def experience, the PS3DOC-1 can be interfaced with Flight Display System's HD LCDs which are available in 17", 20", 26", 32", and 42" sizes. All of these HD LCDs come standard with 2 HDMI inputs. The DAPSHDMI-1 is a splitter with 2 inputs and 8 outputs that allows for extending and distributing the HDMI signal.

	Document Number:	Rev:	Revision Date:
	MAN – PS3DOC/PS3DOC-1	E	06/02/2010 Page 7 of 15

Specifications

Dimensions - Empty	13.32" (W) x 10.1" (H) x 4.43" (D) excludes handle
Dimensions - Docked	14.66" (W) x 13.1" (H) x 4.36" (D)
Power Consumption (Dock Only)	115 VAC
Materials	Aluminum
Weight	PS3DOC - 6 lbs 2.8 oz PS3DOC-1 - 6 lbs 5 oz
Connections	1 x HDMI (Video) 1 x DB-15 (Composite Video/ Audio) 1 x 2-Prong (115VAC Power)

Docking Instructions

1. Pull the handle on the unit upwards to extend the latch.
2. Position the PlayStation 3 so that its connectors are facing the PS3DOC/PS3DOC-1.
3. Pull the HDMI, Composite/Audio, and power pigtails from the pocket and connect to the appropriate ports on the PlayStation 3.
4. Tuck the excess pigtail back into the pocket.
5. Slide the PlayStation 3 back against the PS3DOC/PS3DOC-1.
6. Lock the unit in place by pressing the handle wand down.

Power Requirements

The PS3DOC utilizes a 3-prong power cable to route power to the PlayStation 3. It uses an A/C fan to assist with cooling. We recommend referring to Sony for the latest information regarding power requirements.

The PS3DOC-1 utilizes a 2-prong power cable to route power to the PlayStation 3. It uses an A/C fan to assist with cooling. We recommend referring to Sony for the latest information regarding power requirements.

At the time of the original issue of this manual, Sony recommended a 120V power supply capable of handling 380 watts of power. In an aircraft, this will require an inverter (not included).

It is recommended that the power switch on the PS3DOC/PS3DOC-1 be in the off position when docking the PlayStation 3. After docking, the switch should be moved to the on position to supply power to the PlayStation 3.

Installation Considerations

The capabilities of the PlayStation 3 result in a steady output of warm exhaust. The PS3DOC/PS3DOC-1 is designed with a built-in fan to help dissipate this heat. If the PS3 is in an enclosed area a fan is required to circulate ambient air around the PS3.

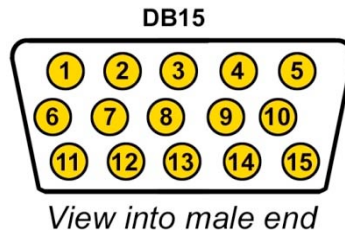
Power/Video

Pin out for P1 (High Density DB-15 Receptacle)


Part numbers for DB-15 connectors, manufactured by Tyco or Amp:

High density, D-sub, 15 contact receptacle (female)
 HD15F pins

P/N 748565-1
 P/N M39029/57-354



Pin Number	Description
1	Audio - Left - Signal
2	Audio - Left - Ground
3	N/C
4	Audio - Right - Signal
5	Audio - Right - Ground
6	N/C
7	Composite Video - Signal
8	Composite Video - Ground
9	N/C
10	N/C
11	N/C
12	N/C
13	N/C
14	N/C
15	N/C

	Document Number: MAN – PS3DOC/PS3DOC-1	Rev: E	Revision Date: 06/02/2010 Page 9 of 15
---	---	-----------------------------	---

Technical Support


Should you have any questions concerning this product or other Flight Display Systems products, please contact our Product Support representatives at (678) 867-6717.

Flight Display Systems
1765 Grassland Parkway
Alpharetta, GA 30004
Phone: 678-867-6717
Fax: 678-867-6742
Email: sales@flightdisplay.com

For further product information, technical data and sample wiring diagrams, please click on the **Dealers** section of our web site at www.flightdisplay.com

Instructions for Continued Airworthiness

The PS3DOC/PS3DOC-1 is designed not to require regular general maintenance.

	Document Number: MAN – PS3DOC/PS3DOC-1	Rev: E	Revision Date: 06/02/2010 Page 10 of 15
---	---	-----------------------------	--

Warranty Information

Flight Display Systems warrants the PS3DOC/PS3DOC-1 against material or manufacturing defects for a two-year period (effective 1/1/2009 on all equipment shipped with 2009 pricing). Warranty begins on date of installation.

Please call our Technical Support at 678-867-6717 to obtain an RMA number. Flight Display Systems will, upon receipt of the failed hardware, remanufacture or replace the unit at our discretion.

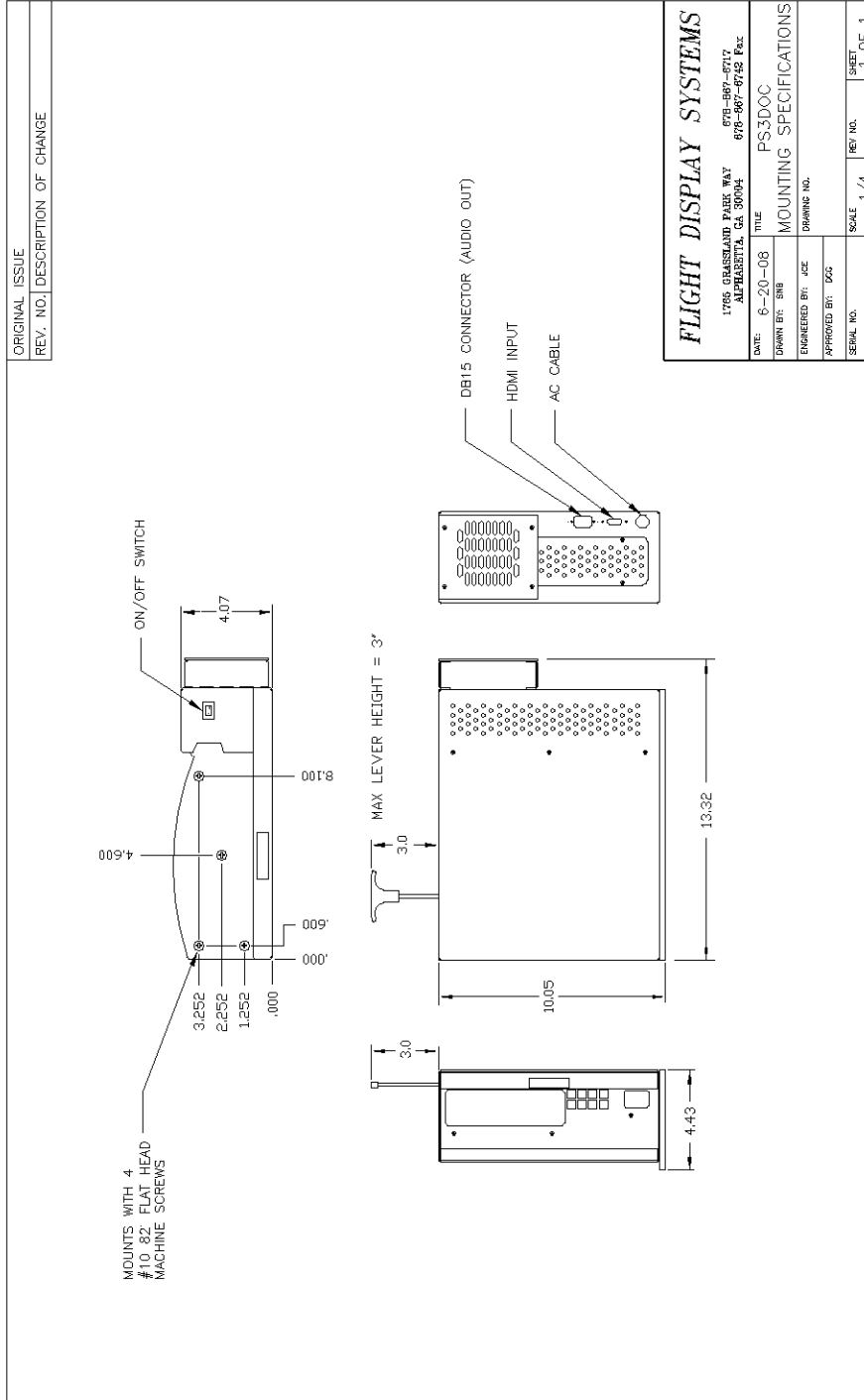
Flight Display Systems will pay Ground Shipping charges for warranted items. Charges for express shipment will be the responsibility of the sender.

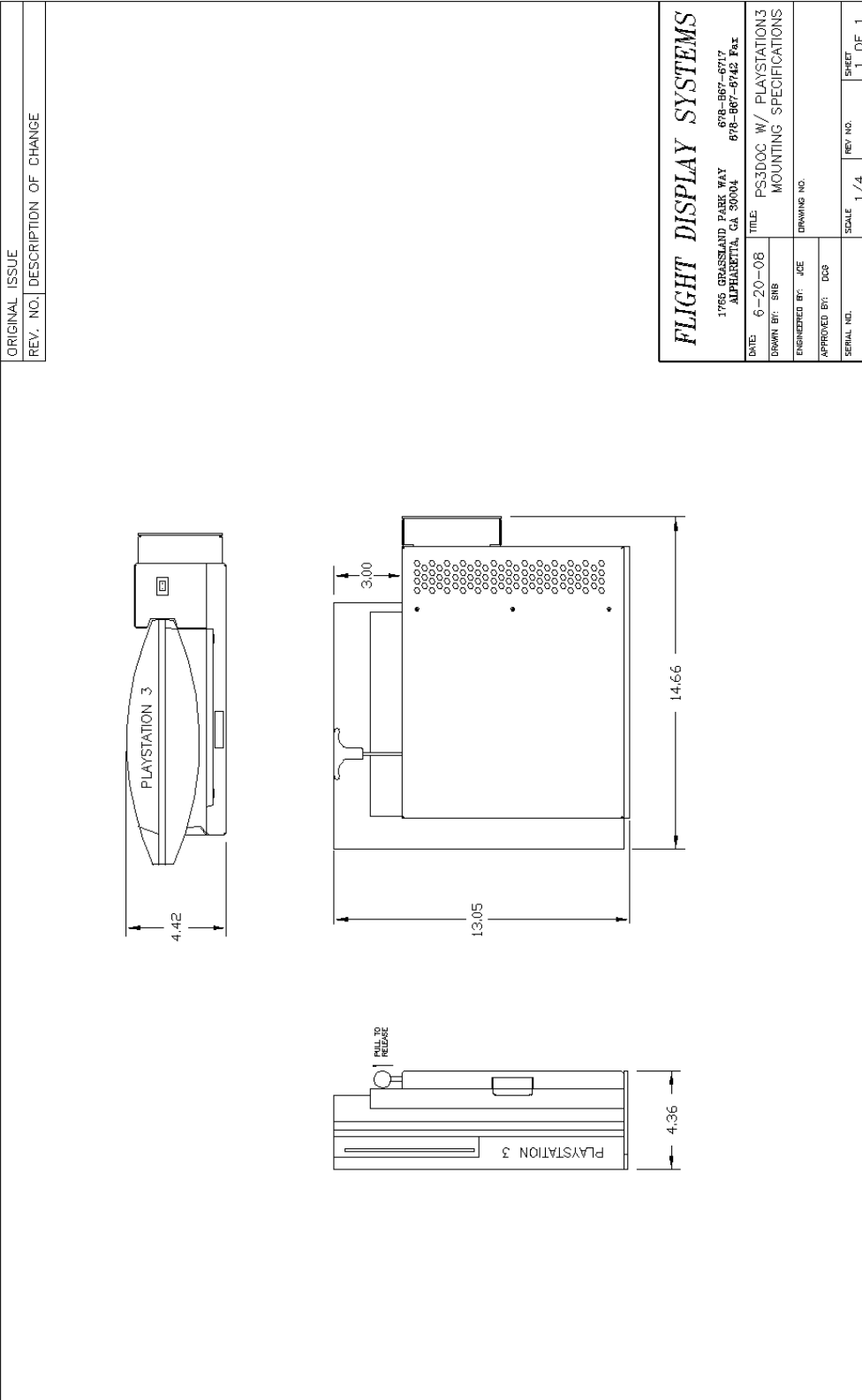
This warranty is not transferable. Any implied warranties expire at the expiration date of this warranty. We shall not be liable for incidental or consequential damages.

This warranty does not cover a defect or failure that has resulted from improper or unreasonable installation, use or maintenance, as determined by Flight Display Systems. This warranty is void if there is any attempt to disassemble or open this product without factory authorization.

Any labor charges associated with the removal of product or related troubleshooting by a firm other than Flight Display Systems or its designee will not be covered.

Installation Drawing

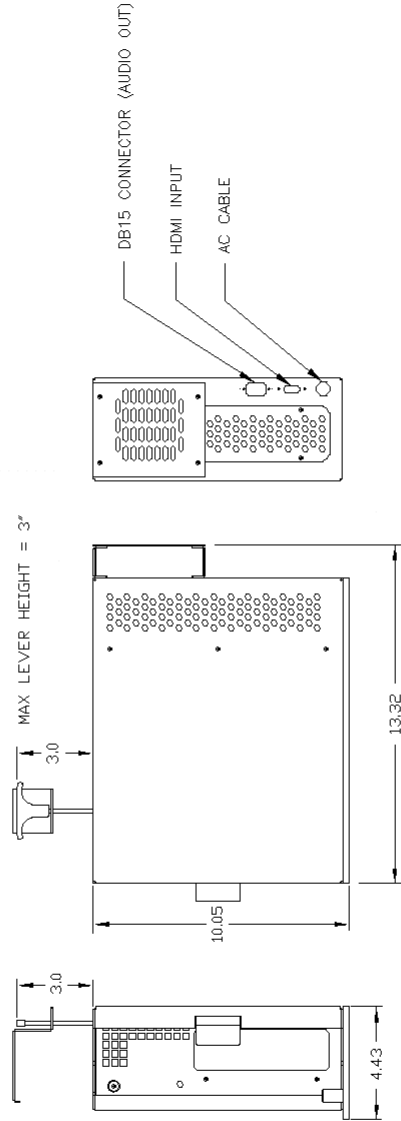
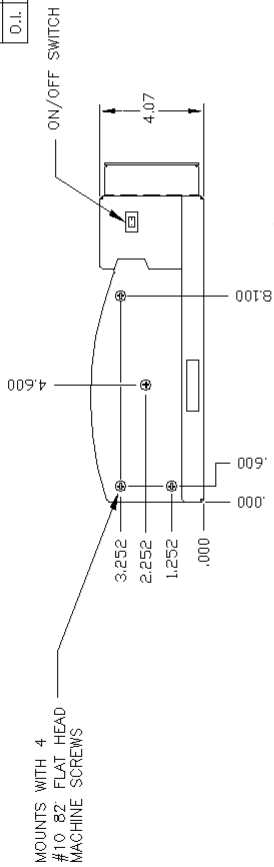




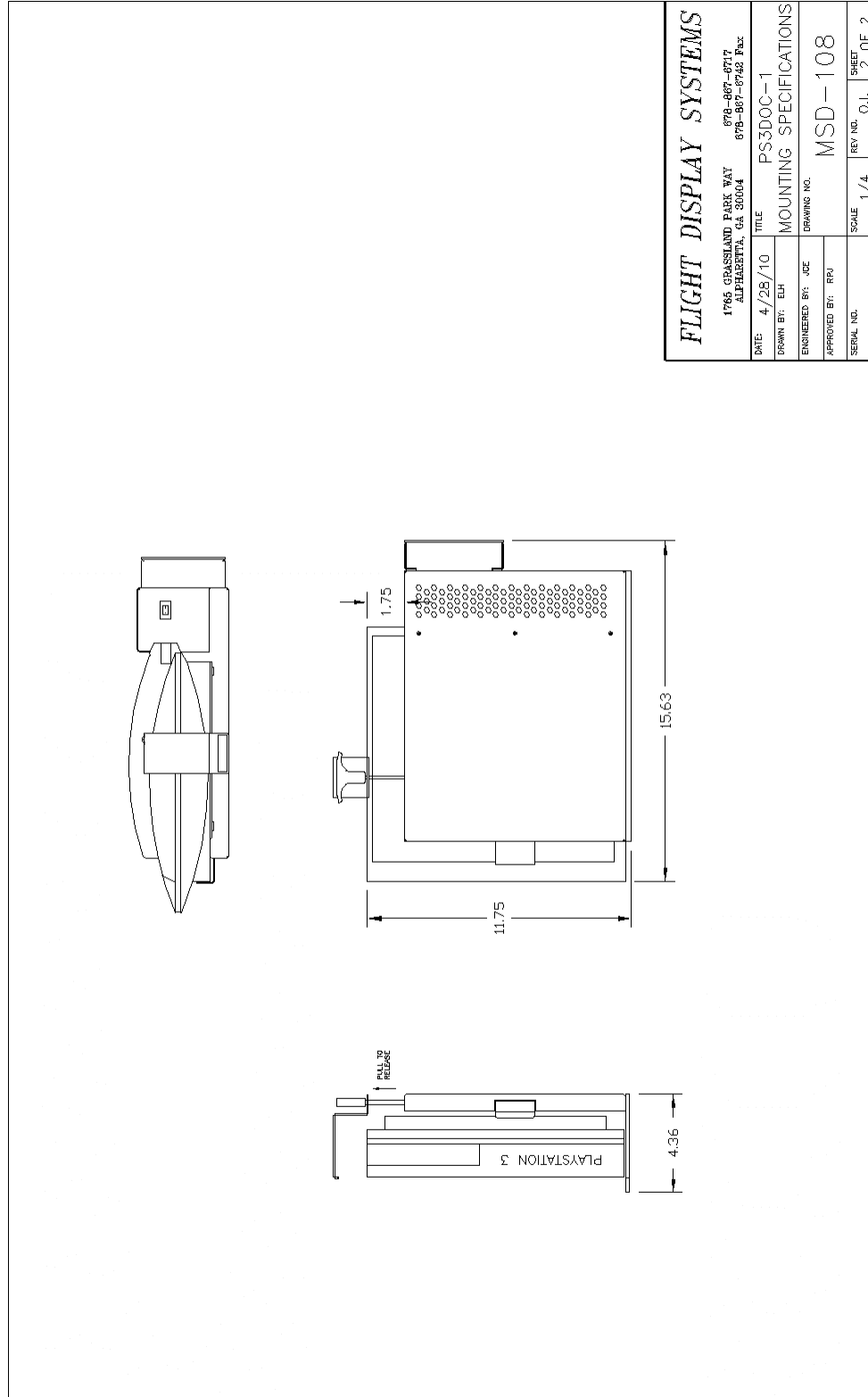
FLIGHT DISPLAY SYSTEMS
1765 GRASSLAND PARK WAY
ALPHARETTA, GA 30004
678-867-6717
678-867-8742 Fax

DATE: 6-20-08 TITLE: PS3DOC W/ PLAYSTATION3 MOUNTING SPECIFICATIONS
DRAWN BY: SHB DRAWING NO.
ENGINEERED BY: JCE
APPROVED BY: DCS
SERIAL NO. SCALE: 1/4 SHEET: 1 OF 1

REV	DESCRIPTION	DATE	BY	APPD
O.I.	ORIGINAL ISSUE	4/28/10	ELH	RPJ



FLIGHT DISPLAY SYSTEMS	
1765 GRASSLAND PARK WAY ALPHARETTA, GA 30004 678-867-8717 678-867-8742 Fax	
DATE: 4/28/10	TITLE: PS3DOC-1
DRAWN BY: ELH	MOUNTING SPECIFICATIONS
ENGINEERED BY: JOE	DRAWING NO. MSD-108
APPROVED BY: RPJ	SCALE: 1/4
SERIAL NO.	REV. NO. 0.1
	SHEET 1 OF 2





Document Number:

MAN – PS3DOC/PS3DOC-1

Rev:

E

Revision Date:

06/02/2010

Page 15 of 15

Log of Revisions

Rev	Date	Page	Description
A	05/30/2008	---	Initial Release
B	06/10/2008	3	Added Installation Considerations
C	07/02/2008	2,3,7	Removed VDC fan references, updated specs and drawings
D	01/29/2009	3,6	Updated specs and warranty info
E	06/02/2010	---	Added PS3DOC-1 info, Format Change